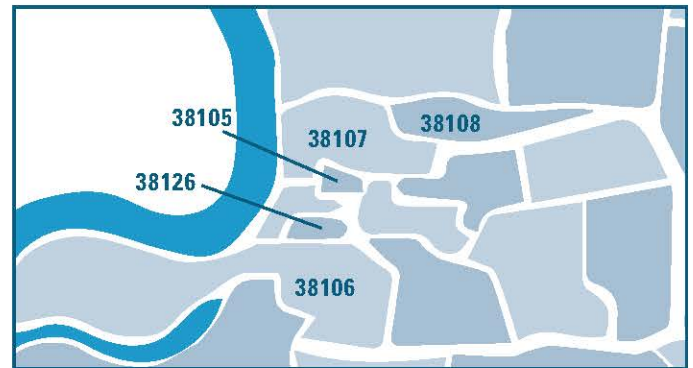


The Women's Foundation for a Greater Memphis' (WFGM) **Vision 2025 Strategic Plan** is to increase investment and reduce poverty in five Memphis zip codes by 2025. The plan focuses on increasing social and economic mobility, expanding partnerships, leveraging impact, and replicating place-based models in additional neighborhoods.

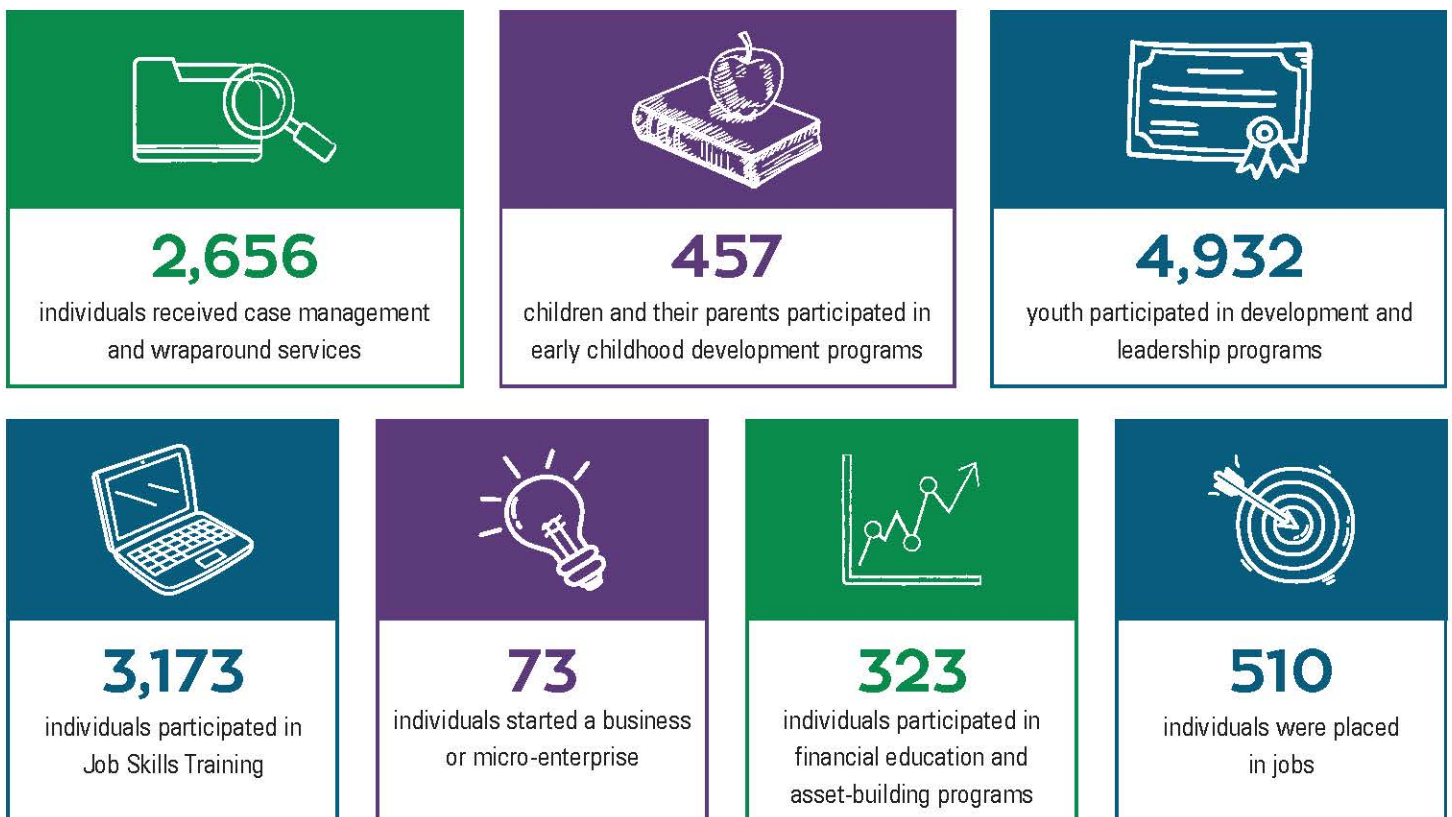
WFGM's place-based work in South City, zip code 38126, is the driving force behind our Vision 2025 strategic plan. WFGM has begun expanding our funding to grantee partners who serve the community in four additional zip codes – 38106, 38108, 38107 and 38109.

In fiscal year 2023-2024, WFGM will distribute \$1.6 million through grantmaking in support of 38 organizations in the community that are providing programs and services focused on the following areas:

- case management and wraparound services;
- early childhood development;
- youth development and employment;
- adult education, training and entrepreneurship;
- financial education and asset-building

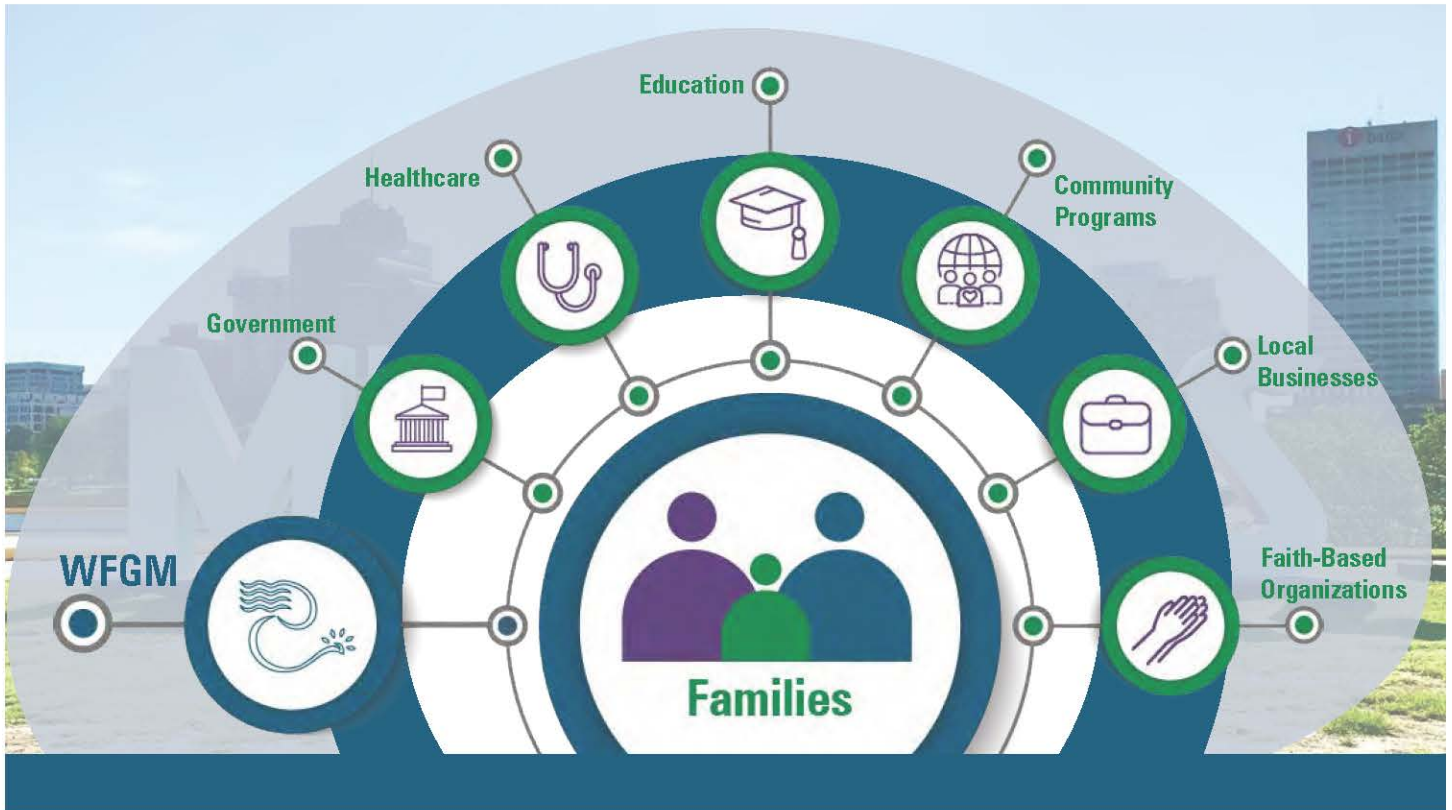


Through community partnerships, WFGM helps provide a holistic approach to meet the needs of families through our place-based strategy. During the first two years of implementing our Vision 2025 Strategic Plan, WFGM—together with our grantees, community partners and stakeholders—served more than 17,000 individuals with the following outcomes:



# CONNECT. INVEST. EMPOWER.

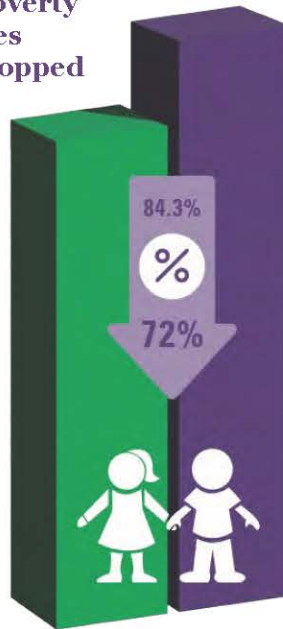
*Creating Change Through Community*



**Overall Poverty Rates Have Decreased**



**Child Poverty Rates Have Dropped**



**Unemployment Rates Have Fallen**



One Commerce Square | 40 S. Main Street, Suite 2280 | Memphis, Tennessee 38103

901.578.9346 | 901.578.9446 (fax) | [www.wfgm.org](http://www.wfgm.org)



Womens Foundation



wfgm\_org



wfgm\_org